

TECHNICAL BULLETIN



DEWORMER FOR DOGS
Reg. No. G4226 (Act 36/1947)



DEWORMER FOR DOGS
Reg. No. G4227 (Act 36/1947)



Exitel Plus and Exitel Plus XL are broad spectrum dewormers for the treatment of mixed infections by nematodes and cestodes of the following species in dogs:



Hookworm



Whipworm

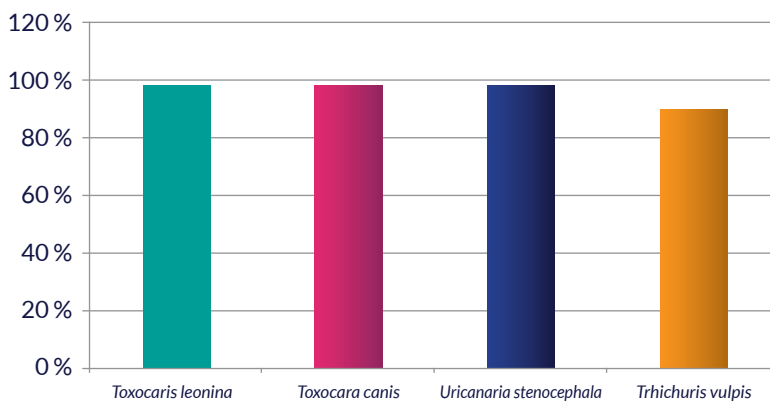


Roundworm



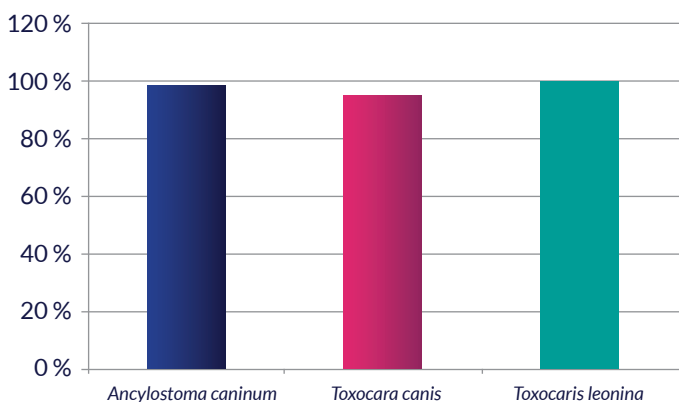
Tapeworm

Exitel Plus Efficacy - Febantel

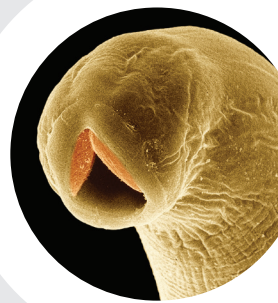


- Febantel is a **broad spectrum** anthelmintic
- Anthelmintic activity of Febantel is due to its **bio-activation to fenbendazole and oxfendazole**.
- The benzimidazoles act on parasites by **interfering with their energy-generating metabolism** by inhibiting fumarate reductase. Blockage of fumarate reductase inhibits generation of mitochondrial energy in the form of ATP.

Exitel Plus Efficacy - Pyrantel pamoate



- Imidazothiazole derivative
- Broad spectrum anthelmintic against nematodes
- Induces neuromuscular blockade and spastic paralysis in the parasites
- Adult worms ingest orally
- Pre-adult worms absorb through their body surface



Exitel Plus

DEWORMER FOR DOGS

Reg. No. G4226 (Act 36/1947)



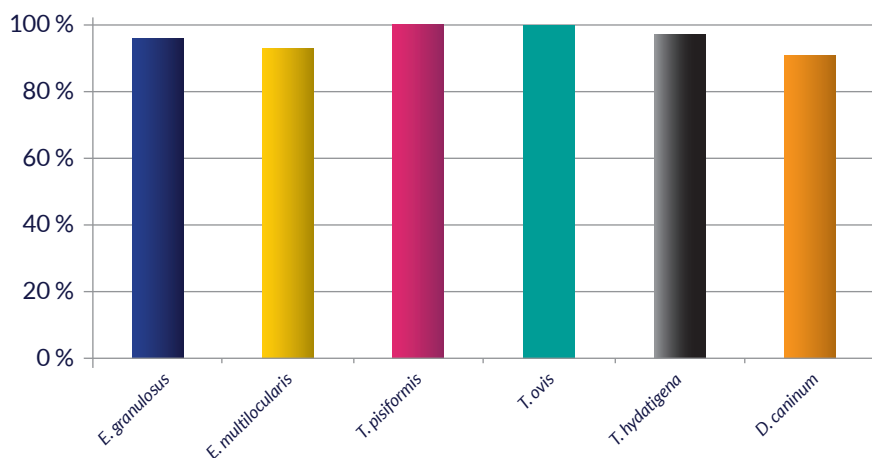
Exitel Plus XL

DEWORMER FOR DOGS

Reg. No. G4227 (Act 36/1947)



Exitel Plus Efficacy - Praziquantel



- Praziquantel is highly effective against all cestode (tapeworm) species – **averaging 96 % efficacy across all species**
- This **high efficacy combined with excellent tolerance** makes it the drug of choice for the treatment of cestode infections in dogs.
- It is also more than **99 % effective against 4-, 7- and 14-day larval stages of *Echinococcus granulosus***
- **100 % effective against 14 and 28 day forms of *Taenia hydatigena* and *Dipylidium caninum*.**

Exitel Plus for dogs - Summary

- Each tablet contains: **Praziquantel, Pyrantel & Febantel**
- Tablets with a **cross breakline** on one side.
- The tablets can be divided into **equal halves or equal quarters**.
- **Use during pregnancy - not used in dogs during the first 4 weeks of pregnancy.** Do not exceed the stated dose when treating pregnant bitches.
- In very rare cases, side effects include gastrointestinal disorders (diarrhoea, emesis).
- **1 tablet per 10 kg bodyweight (flavoured) – Exitel Plus**
- **1 tablet per 35 kg bodyweight (flavoured) – Exitel Plus XL**
- Peak plasma concentrations of praziquantel are achieved within $\pm 2,5$ hours.
- Peak plasma concentrations of fenbendazole/oxfendazole are achieved within $\pm 7-9$ hours.

REFERENCE:

Exitel Plus and Exitel Plus XL registration dossier – data on file.

EXITEL PLUS Reg. No. G4226 (Act 36/1947) | Contains: 50 mg Praziquantel, 50 mg Pyrantel (equivalent to 144 mg pyrantel embonate) and 150 mg Febantel.

EXITEL PLUS XL Reg. No. G4227 (Act 36/1947) | Contains: 175 mg Praziquantel, 175 mg Pyrantel (equivalent to 504 mg pyrantel embonate) and 525 mg Febantel.

REGISTRATION HOLDER/ REGISTRASIEHOUER

Intervet South Africa (Pty) Ltd.

20 Spartan Road, Spartan, 1619, RSA

Tel: +27 (0) 11 923 9300, Fax: +27 (0) 11 392 3158

www.msdd-animal-health.co.za | ZA/EXITELP/0118/0001

 **MSD**
Animal Health